



NOTTINGHAM  
HIGH SCHOOL

# PARTNERSHIP & OUTREACH

COMMITTED TO MAKING A POSITIVE  
IMPACT IN OUR COMMUNITY



# PARTNERSHIP & OUTREACH



## FROM THE HEADMASTER

**Nottingham High School has played an important role in the life of Nottingham for over 500 years.**

Now a co-educational independent school with 1083 students, we have been named by the Sunday Times Parent Power supplement as the top independent school in the East Midlands and are still very much an integral part of our local community. We hope through this booklet to show a selection of our many activities that reach out into the local area, demonstrating the extent to which we contribute both to the education of children across the region and to our local economy.

Some assume that independent education is elitist, but I hope that what follows creates a different narrative. Schools such as Nottingham High are integral parts of their local communities and contribute across such a wide range of areas, enriching the cities where they are based. The children who attend our partnership and outreach events have enjoyable, educational and productive days when they visit us, and the training we provide for their teachers also has a lasting impact.

I hope that you will enjoy discovering how we contribute to the city of Nottingham. If you would like to get involved or discuss any of our projects further please do get in touch.

**Kevin Fear** - Headmaster

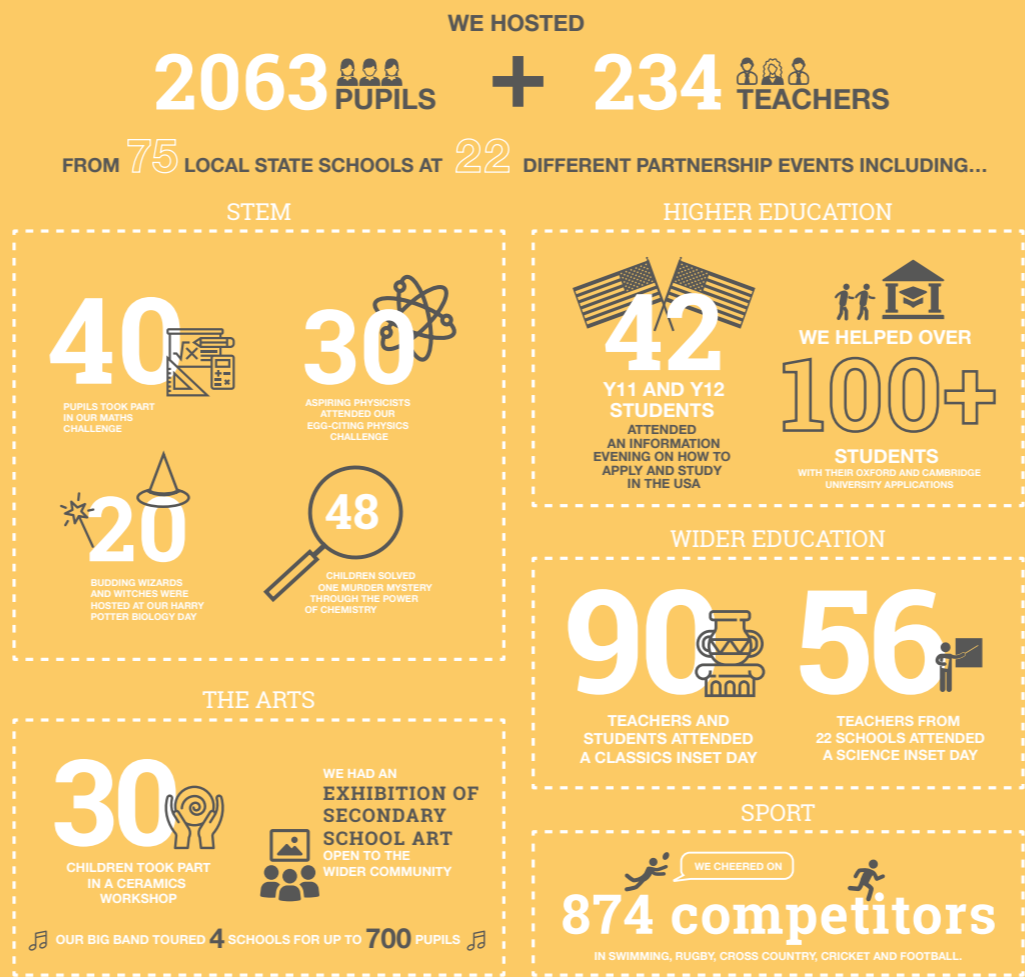
# PARTNERSHIP & OUTREACH

Here at Nottingham High School we are committed to making a positive impact in our community through partnerships with local state schools, charity fundraising, volunteering and more. Here is a small taste of our outreach and partnership work in the 2018-19 school year.

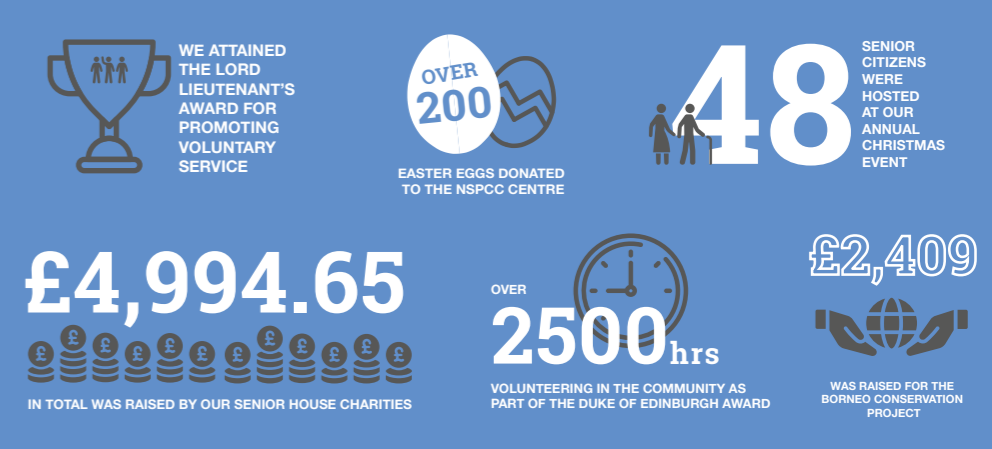
## ECONOMIC IMPACT



## PARTNERSHIP



## COMMUNITY



## INFANT & JUNIOR



# STEM

At Nottingham High School we are dedicated to educating young people and raising their awareness of Science, Technology, Engineering and Mathematics (STEM) subjects and professions. Here are just some of the examples of the partnership and outreach STEM opportunities that we offered during 2018-19.

30

aspiring Physicists  
attended our  
Egg-citing  
Physics Challenge

52

primary school  
pupils competed in  
our Year 5 Physics  
Challenge Day

10

primary schools brought  
teams to crunch the  
numbers in our Year 5  
Maths Challenge

## Chemistry Murder Mystery

Twelve local Primary Schools took part in the in the High School Murder Mystery hosted by our Chemistry Department. Teams of four Year 4 pupils from each school were given the chance to be chemical detectives for the morning, ably assisted by some of our Year 12 chemistry students. In order to solve the mystery and to identify the perpetrator of the heinous crime, the teams were required to analyse trace evidence taken from an ink-stained handkerchief and a set of footprints left behind by the cruel (but somewhat careless) murderer. Using chemical techniques to analyse salt deposits found in the footprints and chromatography to analyse the ink stain, the detectives matched their results to those found on personal items belonging to the main suspects. To their great credit, all of the teams identified the suspect correctly.



## Harry Potter Biology Day

We hosted 20 budding Wizards and Witches at our Harry Potter Biology Day. Pupils took part in a variety of different scientific experiments with a Harry Potter theme, with the aim of conserving some endangered species. Pupils used indicators to analyse chemicals, dissected owl pellets and used microscopes and keys to conclude and present their findings.

*"The children had a fabulous time and felt that they had learned a lot. One student described it as 'life changing' and another said it had made her want to be a scientist!"*

Feedback from a Primary School Class Teacher

*"Using the tweezers made me feel like a real scientist."*

Feedback from a pupil

*"The story was really exciting – like Hollywood"*

Feedback from a pupil



20

BUDDING  
WIZARDS  
& WITCHES



## Training for teachers of Primary School Science

We welcomed 56 teachers from 22 local primary schools for a training day to create a buzz around practical Science teaching and learning.

Our laboratories were set up to facilitate hands-on practical Science experiments, providing ideas and planning opportunities for teachers to take away, develop and incorporate into their own teaching. Our own Science staff were on hand to support over 50 different practical activities, and visitors had the opportunity to share ideas and discuss the different methods, techniques and challenges offered in their various learning environments.

56 TEACHERS FROM  
22 LOCAL  
PRIMARY  
SCHOOLS



# HISTORY & CLASSICS

Nottingham High School are committed to providing further education in History and Classics. Here are just some of the events that were held throughout 2018/19.



# 90

secondary students and teachers attended a Classics INSET day at Nottingham High School

## WWII Evacuees Day

To commemorate the 80<sup>th</sup> anniversary of the start of WWII, Nottingham High School ran a WWII evacuees day. 48 local primary school children had the opportunity to learn about evacuees in Nottinghamshire and undertook various workshops including literary and drama classes to find out more about the war. The pupils were encouraged to get involved, be creative and empathise with the evacuees.



## Caroline Lawrence Author Visit

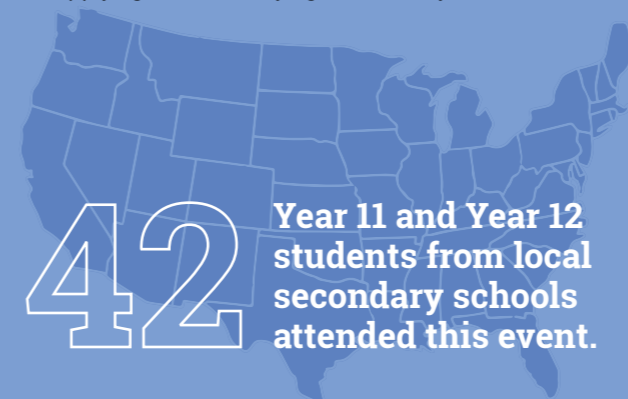
Nottingham High School welcomed Caroline Lawrence, the renowned author of the Roman Mysteries series, for a wonderful afternoon with 170 local primary school children. She carried the children with her on a journey through Greek and Roman myths and movies, while giving away many of her secrets on how to write a great book.



## ACCESS TO HIGHER EDUCATION

### Studying in the USA

Stuart Gordon, Head of UK Outreach at Harvard University, delivered a very informative presentation on applying for and studying at university in the USA.



Year 11 and Year 12 students from local secondary schools attended this event.

## MFL

Learning a modern foreign language has never been more important. We are proud to share with the wider community our expertise in French, German and Spanish.



## MFL Morning

Twenty budding linguists from Five Nottingham primary schools attended our Modern Foreign Languages morning workshop. There were taster sessions of French and German, games on the computer and lots of fun activities to spark an interest for languages in the children.

# 20

budding linguists

# THE ARTS

We support involvement in the arts by offering a variety of partnership and outreach events throughout the academic year. Here are some examples of the work we do with other local schools.



## Big Band Tour

Our Big Band performed to up to 700 pupils across 4 local primary schools, sharing techniques and answering questions from enthusiastic crowds.



## Music in the community

The High School was formed in 1513 at St. Mary's Church in Nottingham. We still have strong links with the church to this day, performing at Carol Concerts, inviting the community to our Founder's Day ceremony and supporting remembrance services.



30 children took part in a Ceramics workshop



# SPORT

We cheered on **874** competitors in swimming, rugby, cross country, cricket and football in a fantastic programme of Primary School Sports Festivals over the course of the year. We are delighted to share our facilities and love of sport in hosting these brilliant events. In the 2018/19 academic year we hosted...

*'It was a fantastic day, our children hadn't played a match before and really enjoyed it'*

Feedback from a Primary School Class Teacher

### Tag Rugby Festival

105 primary school pupils joined us for a fun-filled day of tag rugby games played in a group format. Teams that finished in first position were awarded a trophy.

### Junior School Cross Country Races

We held our annual Junior School Cross Country Races at Wollaton Park in Nottingham. 483 pupils competed in the races from 20 different primary schools.

### MCCF Cricket Hub

The High School is proud to host the MCC Foundation Nottingham Cricket Hub, providing the facilities for talented young cricketers from state schools across the region to develop their skills and love of the game.

### Cricket Outreach Programme

Our cricket coach visits 8 different primary schools each week as part of our cricket outreach programme in the lead up to our annual cricket festival.

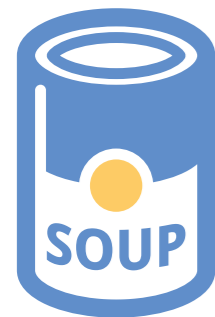
# THE COMMUNITY

The High School holds the Lord-Lieutenant's Award for Promoting Voluntary Service.

"Students all stressed how much enjoyment and self-satisfaction that they get out of these voluntary activities. They learn new skills and work with people from a wide range of backgrounds and experiences. As one student put it 'it is very rewarding being able to put something back into society'."

Section from the awarding report

Our Infant and Junior School held a Harvest collection for the Arches Project, collecting enough dried and tinned goods to create emergency food parcels for



125 people

Our students racked up **over 2,500 hours** of volunteering for the local community as part of their Duke of Edinburgh Awards

2,500 hours

Our Community Action Group all also undertake their own independent volunteering



NSPCC

Over 200 Easter Eggs and bags of Christmas presents were collected and donated to our local NSPCC centre

Our CCF are partnered with the unit at Arnold Hill Academy to share skills and experience. We also provide resources and facilities for a local ATC unit.



We host competitions and training events for the Nottinghamshire Chess Association



80

local school children competed in our Mini-Olympics competition

# THE COMMUNITY



We hosted 48  
Senior Citizens  
at our annual  
Christmas lunch

## 30 children

We took 30 children from 2 local primary schools on a residential trip to the Hollowford Centre in Derby, providing the pupils with an amazing experience of outdoor education. This was funded, organised and staffed by our Community Action team.



& so much more...

# CHARITY

Each year our four senior school houses choose a charity they wish to support and work hard to ensure they fundraise as much as possible.



Mellers' House delivered a cheque of £1,200 and collected and loaded bags of clothes to give to Operation Orphan, helping to 'Keep A Child Warm' in Romania, Moldova and Hungary.

£1,200



6,503  
sponsored miles

...the distance between Nottingham High School and the Berega Hospital in Tanzania - were ran, cycled and swam by Maples' House. Money was also raised at their Berega coin fill. Maples' House raised a total in excess of £1,900!



# CHARITY

## YOUNGMINDS

A total of **£875** was given to YoungMinds, a charity that fights for children and young people's mental health, raised by Cooper's House.

£875

## bamboozle

White's House chose to support the Bamboozle Theatre Company, an organisation that works with profoundly disabled children. They held a very successful cake sale and coin fill along with other fundraising activities which raised

**£975**



£2,290.13 raised for Children in need



We raised **£2409.67** for the Borneo Conservation Project, making a big impact on wildlife across the island.

£1,543.13 raised for Comic relief

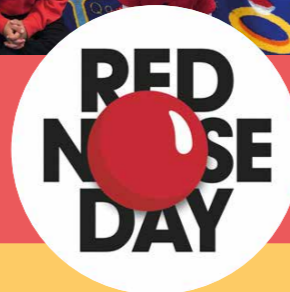
COMIC RELIEF

**£1,543.13**

## ageUK

**£2,000**

- We collected clothes, toys and other items for sale to donate to the Nottingham Age UK charity shop. A total in excess of **£2,000** was raised thanks to the donations made from Nottingham High Infant School and Junior School.
- 'A Lone Stars' were sold to pupils, parents and grandparents in the Infant and Junior School raising **£189.20**.
- Pupils made **Christmas cards** for Age UK Nottingham to distribute to elderly people.
- Our **Chamber Choir** went to the Walton Hotel to perform for the Age UK Nottingham Christmas Tea



**£607.50**

All Infant and Junior School pupils dressed in Red (the redder the better!) and held a massive cake sale and raffle with red prizes, raising a fantastic **£607.50**. Cakes were offered for sale at the end of school and remaining cakes were taken to the homeless shelter in Nottingham at the end of day.

*& so much more...*

# ECONOMIC IMPACT

We have used a tool developed by Oxford Economics for the Independent Schools Council to demonstrate how important Nottingham High School is to the local economy.

- Our total contribution to UK GDP this year was **£22,820,945**

- In 2018/19 Nottingham High School's total contribution to the GDP of Nottingham LAD was **£11,422,245**

- Through the three channels of impact, Nottingham High School supports **0.32%** of all GDP in Nottingham LAD.

- The estimated total number of UK jobs supported by our school's activities is **517** - this includes the **249** people we employ directly but also the jobs in the supply chain to the school and the jobs supported by the spending of our staff. Nearly **300** of these jobs are created here directly in Nottingham.

- Through the three channels of impact, Nottingham High School supports **0.29%** of all jobs in Nottingham LAD.
- **£7,153,463** of UK tax is supported by Nottingham High School activities.
- **£5,881,875** total savings are generated for the UK taxpayer as a result of attendance at Nottingham High School by pupils who would otherwise take up a free State school place.

## Bursary Support

In addition to all of the activities listed throughout this booklet we also offer numerous bursaries each year, many of them for full fees to allow children from some of the most deprived areas of the city to enjoy a High School education.

- Bursary support by Nottingham High School during the year 2018/19 was **£1.1 million**, an increase of **7.2%** on the previous year.
- The total number of pupils assisted rose from **99** (2017/18) to **105** (2018/19).
- **64%** of bursary holders received funding of **75%** or more.

## A Place in the Heart of the City

As an integral part of the Nottinghamshire community and in a place in the heart of the city, Nottingham High School continues to undertake excellent work in providing voluntary service, educational opportunities and support for a wide variety of schools, community groups, individuals and charities. The benefits are tremendous both for those in the School and all who they work with.

By working in partnership with other schools in the area we are able to see the genuine positive impact for all students and staff involved. Likewise, our work supporting community projects and charities offers key educational opportunities as well as practical benefits. With students and staff at the High School so very positive about work which benefits our wider community, we look forward to the continued development of our rich and varied programme.

With plans in place for 2019/20 and beyond, we look forward to a vibrant programme of partnership and outreach opportunities where we will work with large numbers of Nottinghamshire Primary and Secondary schools. Our students will continue to make a positive difference through volunteer experiences. We will also support a variety of charities and community groups again through proactive engagement, as we recognise and value opportunities to work with others for the benefit of local and global communities.

We very much hope that through this publication you can see just how important collaborative working is to our School and our community. The High School has a tremendous amount to offer to so many in Nottingham and further afield. It is a special place and the positive impact it makes is clear.

**Kieron Heath**, Assistant Head (Co-curricular)

‘Thank you so much for putting on these events - they are inspiring and give the children a huge opportunity that they otherwise wouldn't have’

Feedback from a Primary School Class Teacher



# NOTTINGHAM

---

## HIGH SCHOOL

**Nottingham High School**, Waverley Mount, Nottingham, NG7 4ED

**Telephone:** 0115 845 2232 **Email:** [partnership@nottinghamhigh.co.uk](mailto:partnership@nottinghamhigh.co.uk)

[www.nottinghamhigh.co.uk](http://www.nottinghamhigh.co.uk)